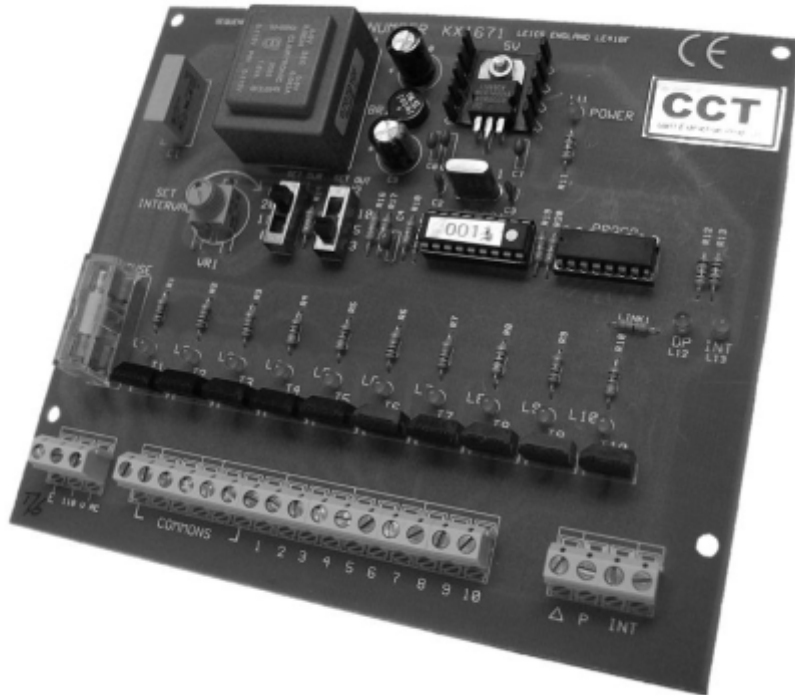




dust filter controls

Product Data Sheet KX1671/KX1672

DS COVER CONTROLLERS



Models 3, 5, 10 Way - 110Vac and 24Vdc

■ **FUNCTION** - The KX1671 & 1672 Controllers are fully automatic and ensure that the diaphragm valves of the Dalamatic, Sintamatic, Siloair or Unicell dust filters are operated in sequence at regular intervals to facilitate the efficient cleaning of the filter elements. The duration of each pulse must be set to suit the type of dust filter being served and should not be altered. The interval between pulses is variable and may be altered to suit operating requirements.



dust filter controls

Circuit Control Technology
48 Boston Road
Gorse Hill Industrial Estate
Beaumont Leys, Leicester, LE4 1AA
Tel: +44 (0) 116 2998000
Fax: +44 (0) 116 2998001
E-mail: sales@dustfiltercontrols.co.uk

Contents

Function	1
Operating Range	2
Installation	2
Wiring/Switch Fuse	2
Controller Protection/Operation	2/3
Controller Installation Settings	4
Optional Functions	5
Fault Finding	5
Technical Drawings	6/7

CCT REV.C/29.02.2012

OPERATING RANGE

110Vac controllers are suitable for operating on a 2-wire ac supply, 50 to 60 Hz. On all models output voltage to the solenoid valve at each outlet will produce 15VA at 110V.

24Vdc controllers require a 2-wire 24Vdc supply. The output voltage to the solenoid valve at each outlet will produce 20Watts (or on 10-way models only 60 Watts**) at 24Vdc.

Temperature limitations for all controllers are -10deg.C to +60deg.C.

**Up to 4 banks of “Cased-type” filters may be operated by one 10-way controller by virtue of its higher power rating. To achieve this connect the controller in parallel to the adjacent bank(s) to be served. Each slave bank has a terminal box, fitted with solenoid valves but no PCB. By this means any one output pulse from the 10-way controller will operate the corresponding solenoid valves on all such interconnected banks simultaneously.

INSTALLATION

On Siloair filters or Dalamatic and Sintamatic Unit or cased filters, according to the model, the controller is normally fitted above, on or below the compressed air manifold.

On Dalamatic and Sintamatic Unit Concept filters, the controller is normally fitted on the base section, connected to a separate box (or boxes) containing the solenoid valves located in a chamber at the top of the filter.

On Unicell filters, the controller is normally fitted below the filter section, connected to a separate box (or boxes) containing the solenoid valves located in the “clean-side” of the filter section.

On Dalamatic or Sintamatic Insertable filters, the controller is normally fitted on either side of the filter body but may be remotely mounted provided not more than 1800mm of nylon tube is used to connect any one solenoid valve to its corresponding diaphragm valve.

For fuller details refer to the DCE User Manual for the particular DCE filter.

WIRING

Prior to energising the controller, care should be taken to ensure that the correct voltage has been selected.

SWITCH FUSE

A fused isolator, fitted with a 3 Amp fuse at the correct input voltage rating, should be fitted between the controller and incoming supply. A high rupturing capacity (HRC) cartridge-type fuse must be used.

CONTROLLER PROTECTION - PCB FUSE

Protection against an output current overload is achieved by a small HRC cartridge fuse mounted on the PCB, labelled “F1”. In an emergency a quick-acting fuse could be used as a temporary alternative ***but a time delay fuse must not be used under any circumstances.***

PCB Fuse Specification

Size : 20mm x 5mm

Rating : For all models

1 Amp (110Vac) or 3 Amp (24Vdc).

Type : High rupturing capacity. Conforms to BS4265 and IEC127 sheet 1. The EEC technical description, if required, is "Grand pouvoir de coupure".

CONTROLLER OPERATION

Normally, with a voltage established to the PCB, either directly or via the transformer, light emitting diodes (LED's) L11 and L12 are permanently lit - compare with ΔP operation. After an initial delay of approximately 20 seconds the timer circuit produces dc pulses to switch the triacs (or, on 24Vdc types, transistor output devices) in sequence. The PCB input voltage then energises the associated solenoid valve. Appropriate LEDs (L1-L10) will flash with each triac or transistor pulse, thus indicating that the controller circuit is producing the pulses. The cleaning cycle will continue until power to the controller is switched off or until one of the optional " ΔP " or "Int." functions is activated.

Both pulse duration and interval must be pre-set to suit the specific Dalamatic, Sintamatic, Siloair or Unicell dust filter being served (see Tables 1 and 2).

Pulse duration must be pre-set in milliseconda by means of the switch marked "SET DUR" and "200/110/60", in accordance with Table 2. Once made, this setting should not be altered.

The interval between pulses is set by turning the control Knob marked "set interval" clockwise to increase the time or anticlockwise to reduce it, as indicated by the curved white symbol, and using a watch or clock to measure the seconds. The recommended initial setting is shown in Table 2, but may be varied empirically (Range : 5-35 secs.).

The number of outputs (solenoid valves) to be fired is selected by the switch marked "SET OUT" and "3/5/10". Setting "3" will allow outputs 1-3 to pulse sequentially. Setting "5" selects outputs 1-5 only. Setting "10" will fire all outputs.

Table 1 - DUST FILTER IDENTIFICATION

Significant Characters*	Type of Filter
DU...	Dalamatic "Unit" series DU
SU...	Sintamatic "Unit" series SU
D.....	Dalamatic "Unit Concept" series D
DX...	Dalamatic Excel "Unit Concept" series
S.....	Sintamatic "Unit Concept" series S
DLM.././10	Dalamatic "Cased" series DLM10
DLM.././15	Dalamatic "Cased" series DLM15
DLM X.././26	Dalamatic Excel "Cased" series DLM X
SC...	Sintamatic "Cased" series SC
DLM V... or DLM SV...	Dalamatic "Insertable" series DLM V
SI.....	Sintamatic "Insertable" series CS1
VS...	Siloair series VS
C.....	Unicell series C

*As stamped on "MODEL" panel on Serial no. nameplate, mounted on outside of Filter

Table 2 - CONTROLLER INSTALLATION SETTINGS

Filter type	Pulse Duration (Fixed) ms	Interval (Variable) secs
<u>Dalamatic</u>		
Unit Concept (series D and DC) All models	110	12
Unit (series DU) Models DU7, 10, 14 and 20	200	25
Models DU30 and 45	110	12
Insertable (series DLM V) Models V3/7, 4/7*, 5/12* 6/10*, 7/7*, 7.5/12*, 8/7* 9/15*, 10/10*, 12/10*, 13/12* 14/7*, 15/12*, 15/15*, 18/15* and 20/10 (5-valve version) Note: All of these normally have dual-element cleaning i.e. two jet tubes per valve. Alternatively, those marked with an asterisk (*) may have single element cleaning i.e. one jet tube per valve, settings for which are:	200	25
	110	12
Cased (series DLM 10) All models	60	12
Cased (DLM 15 and DLM X) All models	110	12
<u>Sintamatic</u>		
Unit Concept (series S) All models	110	12
Unit (series SU) All models	110	12.5
Insertable (series CS1) All models	110	12.5
Cased (series SC) All models	110	12
<u>Siloair</u>		
(Series VS) - All models	200	12
<u>Unicell</u>		
(Series C) - All models	200	12

OPTIONAL FUNCTIONS

1. Differential Pressure (ΔP)

A ΔP function is incorporated into the PCB for use in conjunction with a Differential Pressure Switch to control the cleaning cycle of DS Cover Controller(s) on Dalamatic installations. ***It is not suitable for use with Sintamatic, Siloair or Unicell filters.*** Tappings for the differential pressure switch are taken from the clean and dirty sides of the dust filter. For more information refer to SCS drawings KX63000, KX64001, PS0200 and/or PSI.200, whichever is or are applicable..

ΔP Operation When a DS Cover Controller is governed by a differential pressure switch, LED L11 only will be permanently lit. Once a signal from the pressure switch is received L12 will also light up and if the signal continues without interruption for a minimum of 20 seconds the)P circuit will be initiated. a normal cleaning cycle will follow, LED's flashing with each pulse. If the pressure switch signal ceases during the cycle, L12 will go out ***but the cycle will be completed***, leaving the controller reset ready for the next signal. If the pressure switch remains open a further cycle will commence, and so on.

2. Intermittent (Int.)

This function is primarily intended for interlocking with other associated controls such as the fan starter. With a normally closed (NC) contact connected to these terminals, LED's L11, L12 and L13 will be lit. When the contact opens. e.g. upon energisation of the fan or blower, L13 will go out and the timer circuit will be initiated. Normal cleaning cycles will follow, output LED's flashing with each triac or transistor pulse.

When the contact closes again, L13 will light up and ***the cleaning pulses will stop immediately***. Upon receiving the next signal the contact will re-open and the cleaning cycles will continue, starting from the next triac or transistor in sequence.

DUST FILTER OPERATION

Important: Before starting up any equipment, refer to the User Manual specific to your dust filter and carefully follow the instructions given under the headings "**Installation**" and "**Commissioning**". When making your preliminary checks, or during the start-up sequence, particularly note that ***on filters fitted with an explosion panel the cleaning system should not be operated on its own for longer than necessary*** as the pressure produced could weaken the Membrex membrane.

FAULT FINDING

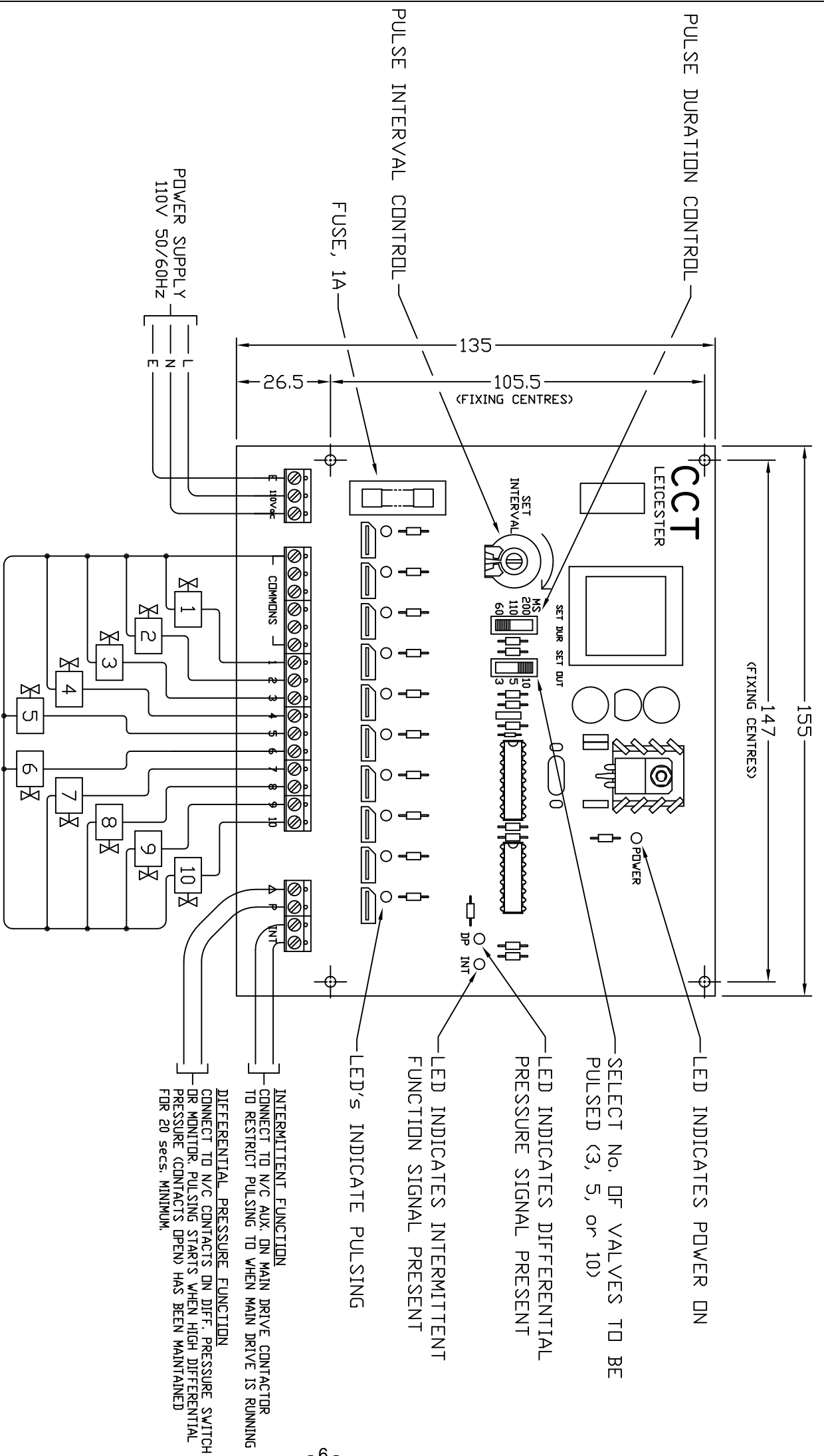
1. Fuses

In the event of DC Cover Controller failure, first check that the switch fuse is intact and that the correct electrical supply is connected to the appropriate terminals. If it is and LED L12 is not lit, check the HRC fuse mounted on the PCB and replace it if necessary. Fuses will tire and fail over time and vibration may also shorten their working life. Routine replacement of the fuse is recommended to prevent filter breakdown due to fuse failure.

2. Output Triacs (or Transistors)

The triacs (or transistors) are situated adjacent to the output terminals on the edge of the PCB and labelled T1, T2 etc. They are reliable devices and in many ways self-protecting but when misused or in some way defective they usually fail to "close circuit". This may be detected easily because the associated solenoid valve will be continually energised and will often overheat.

If a replacement PCB Assembly is not available and it is important to keep the dust filter running it is possible to do so with the defective output disconnected until a new board can be fitted, but a careful watch must be Kept on Dalamatic, Sintamatic, Siloair or Unicell filter performance.



SOLENOID VALVES 110V_{ac} COILS
(ENSURE CORRECT VOLTAGE ARE FITTED)

ALL DIMENSIONS IN MILLIMETRES
THIRD ANGLE PROJECTION

Circuit Control Technology.

48 BOSTON ROAD,
GORSSE HILL INDUSTRIAL ESTATE,
LEICESTER, LE4 1AA
Tel: +44 (0) 116 2998000 Fax: +44 (0) 116 2998001

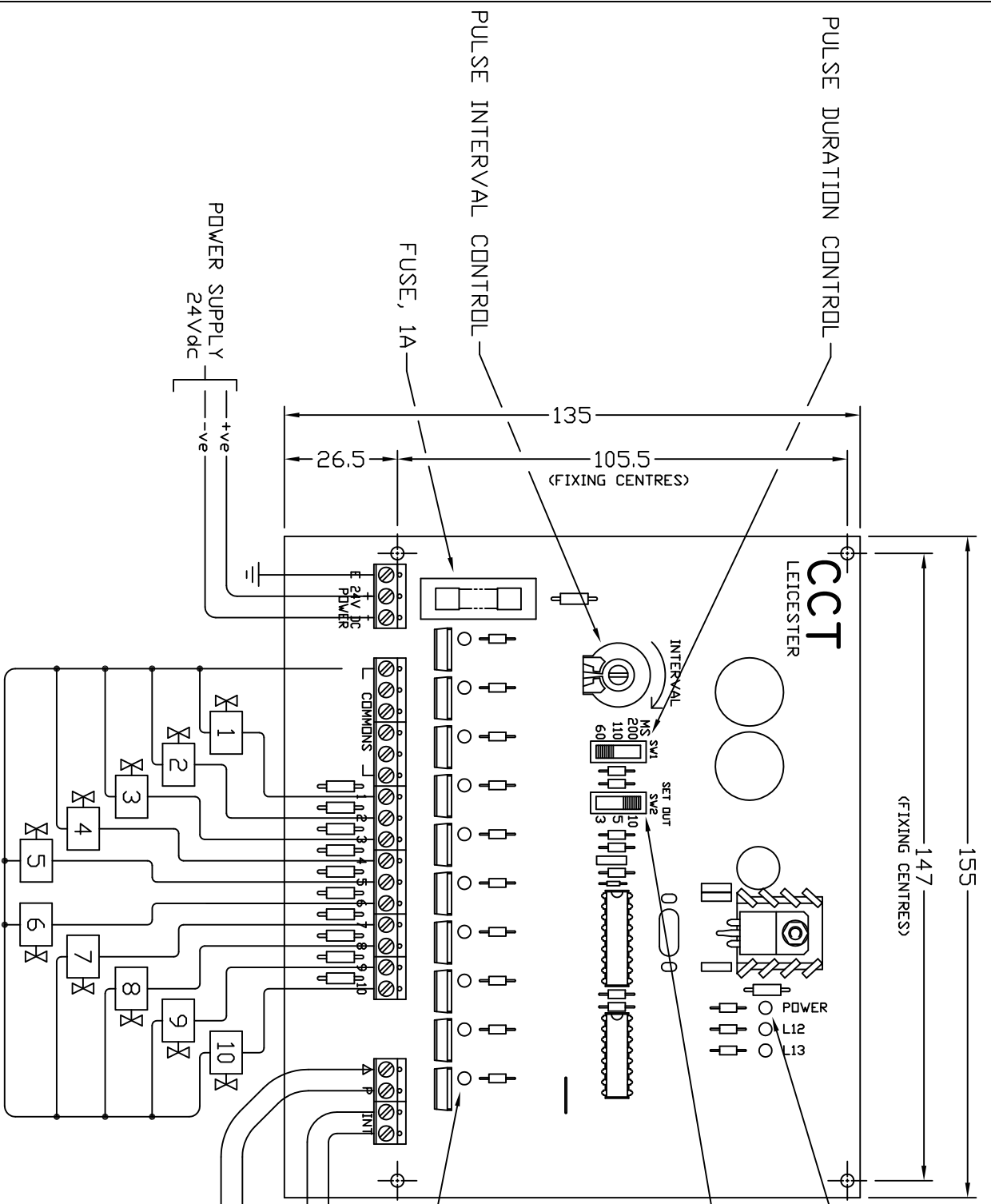
Title: 10 WAY - 110V_{ac} IN/110V_{ac} OUT
SEQUENCE CONTROLLER PCB ASSY.
GENERAL ARRANGEMENT

Part No:	KX1671		
Issue	Description	Date	
D	RE-ISSUED WITH REVISED TITLE/LOCK	10.06.04	
Drwn.	LOF	24.11.98	
Chkd.	/	/	
Appd.	/	/	
CADFile:	SOC\KX00\K167100	Plot Date:	10.06.04
Dwg. No.	KX16711010		
Sheet	1 of 1		
Rev.	D		

INTERMITTENT FUNCTION
CONNECT TO N/C AUX. ON MAIN DRIVE CONTACTOR TO RESTRICT PULSING TO WHEN MAIN DRIVE IS RUNNING

DIFFERENTIAL PRESSURE FUNCTION
CONNECT TO N/C CONTACTS ON DIFF. PRESSURE SWITCH OR MONITOR. PULSING STARTS WHEN HIGH DIFFERENTIAL PRESSURE (CONTACTS OPEN) HAS BEEN MAINTAINED FOR 20 SECS. MINIMUM.

- LED INDICATES POWER ON
- SELECT NO. OF VALVES TO BE PULSED (3, 5, or 10)
- LED INDICATES DIFFERENTIAL PRESSURE SIGNAL PRESENT
- LED INDICATES INTERMITTENT FUNCTION SIGNAL PRESENT
- LED'S INDICATE PULSING



SOLENOID VALVES - 24Vdc COILS - ENSURE CORRECT VOLTAGE ARE FITTED

ALL DIMENSIONS IN MILLIMETRES
THIRD ANGLE PROJECTION

<p>Circuit Control Technology. 48 BOSTON ROAD, GORSE HILL INDUSTRIAL ESTATE, BEAUMONT LEYS, LEICESTER, LE4 1AA Tel: +44 (0) 116 2998000 Fax: +44 (0) 116 2998001</p>		<p>Part No: KX1672</p>	
<p>Title: 10 WAY - 24Vdc IN/24Vdc OUT SEQUENCE CONTROLLER PCB ASSY. GENERAL ARRANGEMENT</p>		<p>Dwg. No. KX16721010</p>	
<p>Issue</p>		<p>Date</p>	
<p>1 D RE-ISSUED WITH REVISED TITLE/LOCK</p>	<p>24.11.98</p>	<p>10.06.04</p>	<p>100604</p>
<p>2 JCA</p>	<p>24.11.98</p>	<p>10.06.04</p>	<p>100604</p>
<p>3 Chkd.</p>	<p>24.11.98</p>	<p>10.06.04</p>	<p>100604</p>
<p>4 Appd.</p>	<p>24.11.98</p>	<p>10.06.04</p>	<p>100604</p>
<p>THIS DRAWING IS THE COPYRIGHT OF CIRCUIT CONTROL TECHNOLOGY AND MAY NOT BE COPIED, REPRODUCED OR TRANSMITTED IN ANY FORM OR BY ANY MEANS WITHOUT THE WRITTEN PERMISSION OF CIRCUIT CONTROL TECHNOLOGY.</p>		<p>THIS DRAWING IS THE COPYRIGHT OF CIRCUIT CONTROL TECHNOLOGY AND MAY NOT BE COPIED, REPRODUCED OR TRANSMITTED IN ANY FORM OR BY ANY MEANS WITHOUT THE WRITTEN PERMISSION OF CIRCUIT CONTROL TECHNOLOGY.</p>	

INTERMITTENT FUNCTION: CONNECT TO N/C AUX. ON MAIN DRIVE CONTACTOR TO RESTRICT PULSING TO WHEN MAIN DRIVE IS RUNNING

DIFFERENTIAL PRESSURE FUNCTION: CONNECT TO N/C CONTACTS ON DIFF. PRESSURE SWITCH OR MONITOR. PULSING STARTS WHEN HIGH DIFFERENTIAL PRESSURE (CONTACTS OPEN) HAS BEEN MAINTAINED FOR 20 SECS. MINIMUM.

LED'S INDICATE PULSING

LED INDICATES POWER ON

SELECT NO. OF VALVES TO BE PULSED (3, 5 or 10)